

The background is a photograph of an industrial manufacturing environment. A robotic arm is visible on the right, and a complex, multi-holed metal part is being processed on the left. The scene is lit with bright, focused lights. The bottom right corner features a decorative graphic of overlapping green triangles of various shades.

MODULAR Simplify and scale industrial analytics



ORGANISATION PROFILE

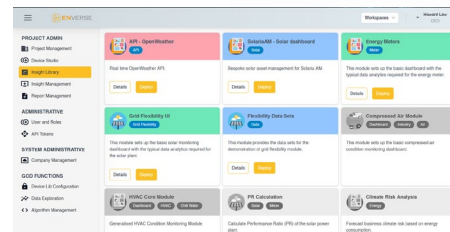


Enverse provides system integration services, data hosting on the cloud, and data analytics services on our platform. We provide a marketplace of data analytics services that can be standard out-of-the-box or custom built

We have secured grants from the UK and was in a few government-led acceleration programmes. We have been in EUREKA consortium up to running phase.

We're expanding our library of connectivity, data analytics, and dashboard solutions across different industries

We provide control panels for integration with existing or new digital infrastructure



No code solution to use smart engineering in industrial services.

PROPOSAL INTRODUCTION (I)

Vision: Insight Platform that functions as a one-stop digital solutions that provides end-users an easy-to-use solution to maximize value of their data at manufacturing plant. End-users can easily access any market proven data analytics and digital twin solutions in the manufacturing environment to improve productivity.

The modules can be developed by Enverse, in collaboration with customer, or externally provided.

Motivation:

Industrial digitalization is a highly fragmented market, relying on system integrator to provide the physical and cyber infrastructure. They are not incentivized to provide complete data analytics solution to bring further value to the customers. The shortage of data talent in manufacturer added an additional barrier for data scientist to utilize data meaningfully. We want to reduce the barrier by taking away the complexity of system integration and data analytics, providing manufacturers with data insights that meet their needs.

Content: This project will develop the entire chain of integration tools for manufacturing environment, from system integration, cyber security, data analytics, digital twin, and automated system control,



PROPOSAL INTRODUCTION (II)

Expected outcome: This project will enable the following

- >1 industrial use-case for digital analytics to be developed
- >1 industrial automation use-case developed in collaboration with end-user
- Seamless integration with 2 different PLC vendors

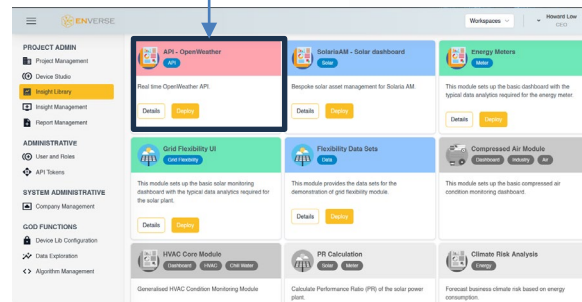
Impacts: what will be the expected market impact of the project

- Reduction of digital integration and data analytics cost by 50%
- Productivity improvement of 20% with efficient use of data
- RTOs will be able to commercialise their research through the profit sharing platform

Schedule: Starting Mid 2024 for 2-3 years

- 3 months define technical and integration requirement
- 6 months integration and data acquisition
- 6m-15m years continual integration, model development
- 6m in defining goals with end-users
- 3m conclusion and exploitation

We're developing this,
so the current and
future end-user can
use it



PARTNERS

Current Consortium:

UK – Enverse (system integrator, platform provider, use-case and solution provider)

Turkey – Eliar – Equipment Manufacturer

Partner search:

[Any country] – Industrial manufacturer

[Any country] – Industrial manufacturer

[Any country] – RTO

[Any country] – Use case provider

[Any country] – Use case provider

And any other partners open to collaborate on industrial manufacturing sector.

Manufacturer



Integrators



On site
Server

Use Case Providers



Consortium benefits

Manufacturer

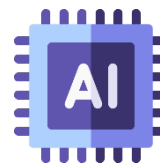


Integrators



On site
Server

Use Case Providers



Industrial users: Access to modules developed through this consortium (foreground IP) through a royalty free license. Consultancy expertise within the consortium to develop digital solutions that improve your manufacturing plants.

Use Case Provider: co-develop solution and co-distribution of solution through the platform. Proportion of revenue split depends on the efforts to be contributed by both parties. Both parties retains their foreground/background the IP developed respectively.

RTO: Access to data for development of analytics module. Both parties retains their foreground/background the IP developed respectively.

CONTACT INFO

Contact info:

Howard Low

howard@enverselab.com

www.enverselab.com



